

## 20W Dual Port Car Charger

### USB-A AND USB-C OUTPUTS

Stay connected and powered up while driving, whether it's your smartphone, tablet, or other gadgets. Experience faster and more efficient charging for all your devices with this sleek and convenient accessory.



### FEATURES

- **INPUT VOLTAGE: 12V-24V DC**
- **USB-A AND USB-C OUTPUTS**  
Charge multiple devices such as smartphones, tablets, iPhone, and iPads
- **INTEGRATED PROTECTION FROM OVER-CURRENT AND SHORT CIRCUITS**
- **FCC, CE & ROHS COMPLIANT**

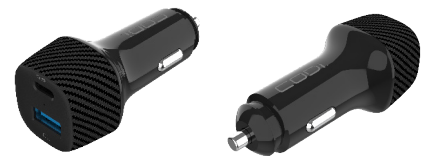
#### USB-A OUTPUT

- **QUICKCHARGE 3.0**  
Allows for charging up to 4x faster than standard chargers
- **18W MAX OUTPUT**  
5V == 3A  
9V == 2A  
12V == 1.5A

#### USB-C OUTPUT

- **POWER DELIVERY: 20W MAX OUTPUT**  
5V == 3A  
9V == 2.22A  
12V == 1.67A
- **PPS (PROGRAMMABLE POWER SUPPLY): 20W MAX OUTPUT**  
3.3V-5.9V == 3A  
3.3V-11V == 2A

PART NUMBER	A01109
INPUT	12V-24V DC
OUTPUTS	USB-C; USB-A
DIMENSIONS	2.75" x 1" x 1"
WEIGHT	0.05lbs
WARRANTY	Limited One Year Warranty



### FOR MORE INFORMATION



Contact our US-based customer support team:

+1 800.263.4462

custsupport@codiworldwide.com

or visit [CODiWorldwide.com](http://CODiWorldwide.com)

CODi Acquisition, LLC  
3070 McCann Farm Drive, Unit 104 // Garnet Valley, PA 19060